

# COALITION OF CARERS IN SCOTLAND

DEWARS CENTRE, PERTH 15<sup>TH</sup> AUG 2018

Robin Tennant

# Introduction

- The Poverty Alliance: who we are
- Poverty: the overall picture
- Poverty and caring
- 3 measures to reduce the impact of poverty on carers

# The Poverty Alliance

Incomes



Access to Services

OPEN TO ALL

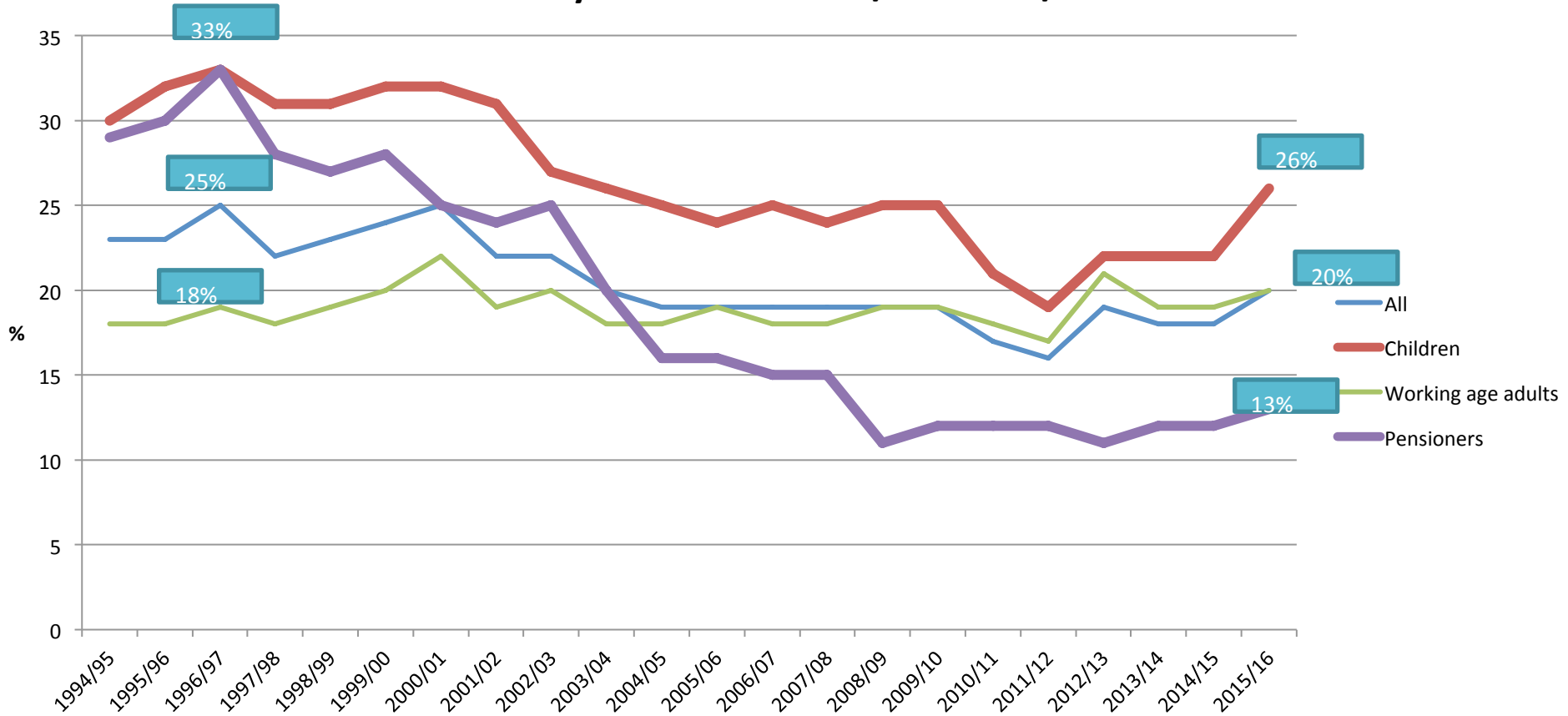
Participation



Attitudes



## Poverty in Scotland 1994/95 - 2015/16



Over the past decade the pressure on household budgets has increased due to the **rising costs of essentials**



**Transport**  
bus prices  
**65%** rise



**Childcare**  
full-time  
nursery for a  
two-year-old  
**over 50%** rise



**Food budget**  
for a  
single person  
**over 50%** rise



**Energy bills**  
**over 40%** rise

 @jrf\_uk #livingstandards

**JRF** JOSEPH  
ROUNTREE  
FOUNDATION

 **the  
POVERTY  
ALLIANCE**  
WORKING TOGETHER TO COMBAT POVERTY

# Poverty and disability/long term illness

- 48% of those living in poverty are disabled people and their families (Counting the Cost, Scope, 2015)
  
- In 2015 Scope found that disabled people spent an average **£550 a month** on disability related expenses (e.g. taxis, increased use of heating, special equipment, care costs, etc. Counting the Cost, Scope, 2015)

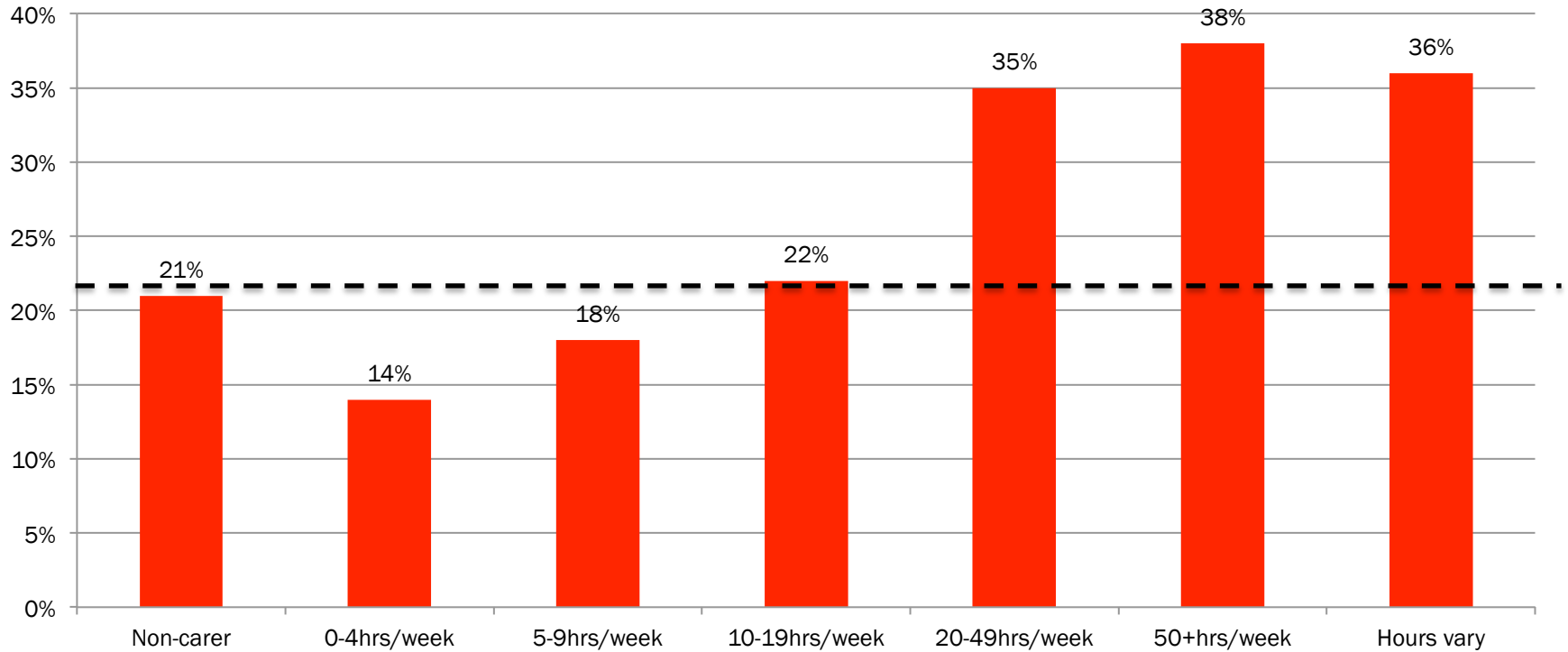
# Poverty and caring

- Almost one-in-eight pupils said they provided care for someone in the household with almost one-third of them stating that no one knew about it.
- Young carers were more likely to be registered for free school meals
- Over half of the young carers cared for someone with a disability, one-third for someone with a long-term condition, almost a quarter for someone with a mental health problem, and around 1-in-10 for someone with a drug or alcohol problem.
- Young carers were twice as likely to report having a limiting illness or disability themselves when compared with non-carer pupils.
- Young carers were less likely to see themselves entering further or higher education.
- Young carers were also slightly more likely than non-carers to have taken part in activities such as work placements, careers guidance and job searches.

Source: GCPH Aug. 2017

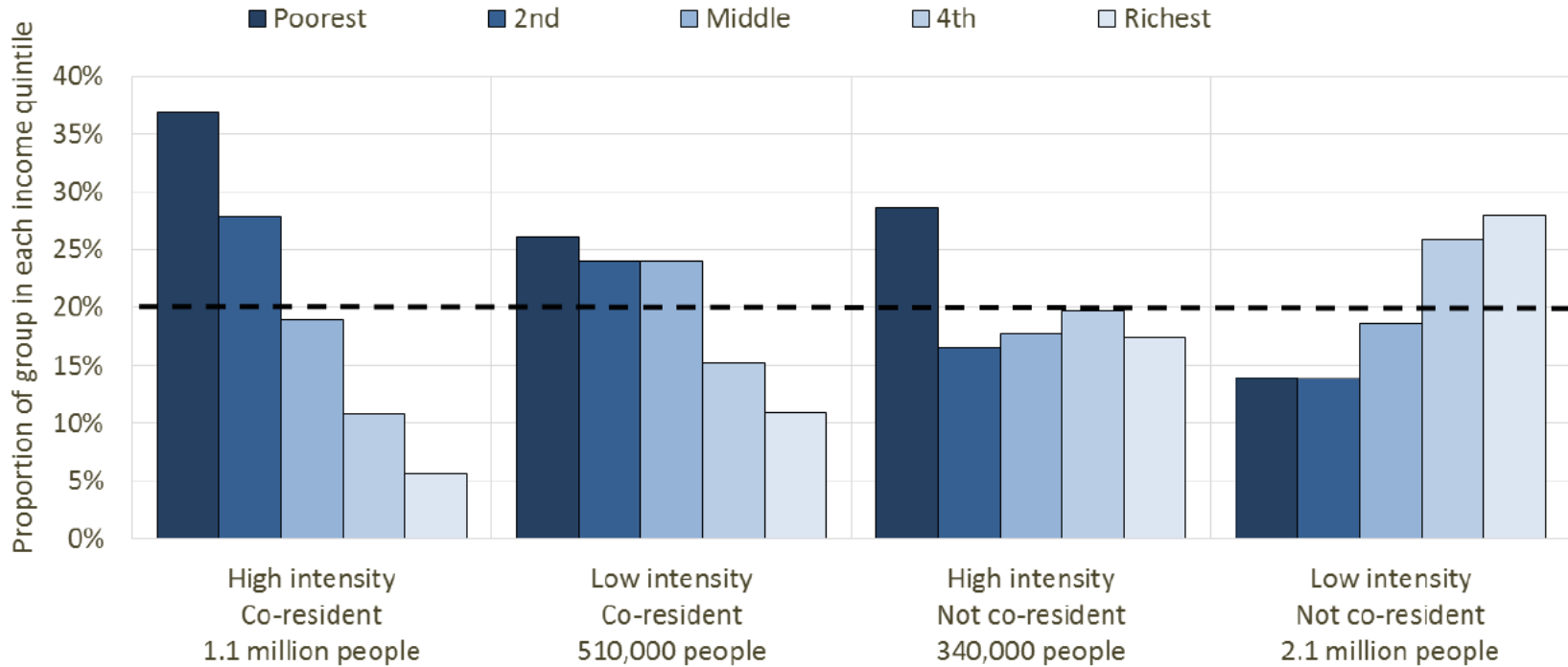


## Carers' poverty rate (aged 16-64. Source NPI 2016)





# Income distribution of w/a carers by intensity and recipient



# Taking Carers out of Poverty

## 1. Raise Carers Allowance in line with MIS

JSA/CA = £73.10 p/w

MIS = £219 p/w

## 2. Labour market: Real Living Wage, Fair Work

## 3. Ending austerity: 'We cannot cut our way out of the crisis'